



## MACRO SELF SUPPORT TOWERS

Have a great price per-foot and medium- sized foot print

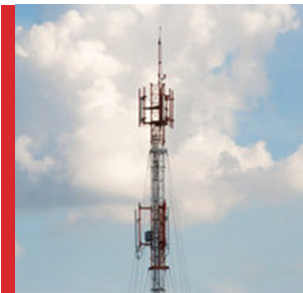
- ⚡ Multi carrier applications up to 400'
- ⚡ 100% solid rod legs and angle bracing
- ⚡ Design for efficient site construction
- ⚡ Industry leading performance



## MONOPOLE TOWERS

Have the smallest footprint; great for urban areas since they can be camouflaged for easy permitting

- ⚡ Wide range of products and finishes
- ⚡ Slip taper designs for efficient construction
- ⚡ Designs to 250'
- ⚡ Significant manufacturing capacity



## GUYED TOWERS

Capable of reaching the tallest heights with the most cost-effective price per foot; suitable for rural areas

- ⚡ Standard heights up to 500'
- ⚡ Ship in fully welded 20' sections
- ⚡ Arcosa kits include all installation hardware
- ⚡ 36" & 42" face designs for various heights



## LIGHT DUTY (LD) STRUCTURES

- ⚡ Optimized for less-than-cellular loading requirements
- ⚡ Professional grade design built to last for decades
- ⚡ Solid member legs and bracing
- ⚡ Ideal for Utility, WISP & Public Safety/Government applications



## TOWER MODIFICATION MATERIALS

Offers factory precise tower modifications by designing & fabricating upgrade components for towers and monopoles

- ⚡ Tower reinforcement materials for towers and monopoles
- ⚡ Short lead times on quotes and packages
- ⚡ Comprehensive close out documentation with each project

